

LETTER TO THE EDITOR

Sporothrix Schenckii Infection

Xiao-Li Huang¹ and Guo-Ming Zhang²

Both authors contributed equally to this work and should be considered co-first authors

¹*Department of Laboratory Medicine, Sihong People's Hospital, Sihong, China*

²*Department of Laboratory Medicine, Shuyang Hospital Affiliated to Xuzhou Medical University, Shuyang, China*

(Clin. Lab. 2018;64:xx-xx. DOI: 10.7754/Clin.Lab.2018.180628)

Correspondence:

Guo-Ming Zhang
Department of Laboratory Medicine
Shuyang People's Hospital
Yingbin Road No. 9
Shuyang
223600 Jiangsu
China
ORCID: 0000-0003-0662-1302
Email: zly52120@163.com
gm@xzhmu.edu.cn

Letter to the Editor accepted June 30, 2018

Supplementary Figures.



Figure 1. Day4 in Sabourand's agar media.

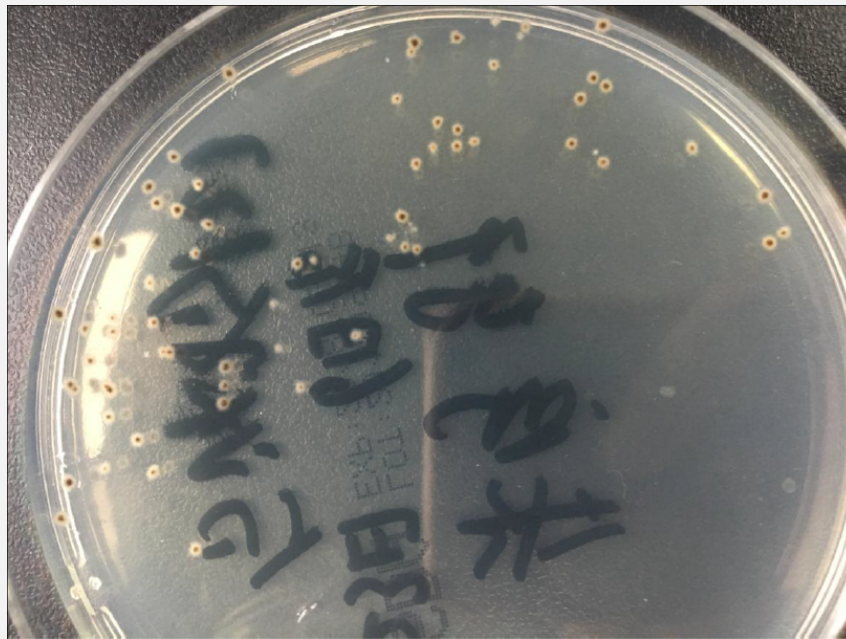


Figure 2. Day 7 in Sabourand's agar media.



Figure 3. Day 30 in Sabourand's agar media.

项目	检测方法	结果
靶向DNA测序鉴定真菌	基因测序法	Sporothrix

1/1

标本条码	1710003041	医院	郑州安图生物工程股份有限公司		
病人姓名	MS 6434	科室		实验号	*BX1700655
性别		住院门诊号		送检标本	
年龄		房/床号		标本情况	无肉眼可见异常
联系电话		申请医生		采样时间	
医院标识				接收时间	2017-12-13 17:04:40
临床诊断					

结果分析:

1. ITS基因扩增可见单一清晰的条带, 测序结果经BLAST比对显示, 与其它菌株序列相似度为:
 Sporothrix globosa (GenBank No. KX690838.1) 99.81%
 Sporothrix schenckii (GenBank No. AB122041.1) 99.64%

2. 本次送检标本序列与Sporothrix globosa相似度最高, 为99.81%, 与第二相似度菌株 Sporothrix schenckii的相似度为99.64%, 因此该标本初步可鉴定为Sporothrix, 之后请结合形态、生化、MS等其他方法进行综合判定, 附序列:

```

    CCTTGGTAAGAGITCCACGTCATGCCGTTTTTCACGGCAGGGCACCTCGGGGGCGTCCGGAGCCGAGGAGA
    ACGTTGGCTTCGGTACTCGGCTCGGAGCCATCCACAGGGCCCGCCACTCGCTTTCGGGGCCCTCCGCCAGGC
    GGAGGGCCCCAACACCAGCGCGCAACGGGGGGGGTGAGGGGGGAAATGACGCTCGGACAGGCAITGCCCGCC
    AGAATGCTGGCGGGCGCAATGTGGCTTCAAAGATTCGATGGTTCGCTGAATTCGCAATTCACATTACGTAT
    CGCATTTCCGCTGGCTTCTTCATCGATGCCAGAGCCAAGAGATCCGTTGTTGAAAGTTTTGATTAATTTTGGTT
    GTTTTCTCAGACGGTTTTTACTGCTGAGATACAAAGGTTTCGTAGGGGCCCGCCCGCCCTTGGGGGGGGGG
    CGGAGGGGGCCGCTGTCGGGGCCCCCGCTCCCGCCCGCCAGAAAGCAGCAGGAGAACGAGATGGGTACGGTTTC
    GCAAGGGTTGGGAGTTGTGAAAACITCTGTAATGATCCCTCCGCAAGTTCA
    
```

注: 对某些属的细菌或真菌, 因靶向基因过于保守而难以鉴定到种, 我们会给出鉴定到属的结果, 必要时需要测序, 分析谱系形成, 生化、MS等其他方法进行综合判定。

Figure 4. The DNA sequencing of sporothrix schenckii.